

P
I
C
T
O
G
R
A
M

U.S.S. — I — 1 — 1



SPECIAL APPRECIATION IS ACCORDED TO:

The Public Affairs Office of the USS FRANKLIN D. ROOSEVELT whose assistance in layout made this publication possible.

The Photo Lab of the USS FRANKLIN D. ROOSEVELT who processed the scores of pictures required to compile this Pictogram.

The Print Shop of the FDR for the effort involved in completing the entire job in only five days.

PICTOGRAM STAFF

LT H. L. MASHAW II
EDITOR

GMT MILLARD SHARP
ASST. EDITOR AND PHOTOGRAPHY

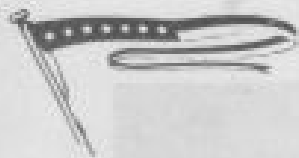


RDS TOM EBNER
PHOTOGRAPHER

VN3 ART CONNORS
LAYOUT EDITOR

VN3 MIKE DAY
LAYOUT EDITOR





COMMANDING OFFICER
U. S. S. LEAHY (DLG-18)
C/O FLEET POST OFFICE
NEW YORK, NEW YORK

19 AUGUST 1972

Dear LEAHY Supporter,

This will be the last Pictogram of our current Mediterranean Cruise. As we make our last liberty port and set our course westward, we close the pages of a memorable seven months. Since getting underway on Valentines Day, we have traveled to many ports and demonstrated that United States Policy is backed by a capable, mobile and fully independent Navy.

Since our last Pictogram, we have stopped at Rhodes, Greece; Augusta Bay, Sicily; Antalya and Mersin Turkey; Athens, Greece; Naples, Turkey; Toulon, France and Barcelona, Spain. Operating at Sea, LEAHY participated in several exercises: National Week, a major war game including most of the U. S. Sixth Fleet; Good Friendship, an Amphibious Transit and Assault with the Turkish Armed Forces; and Quickdraw, several short Naval war games with the Italian Navy.

The Engineers have distinguished themselves by winning the Engineering Battle Efficiency "E" for fiscal year 1972. Supply personnel kept the endless river of logistics flowing. Ship services from laundry to food were maintained at the highest standards. The Operations Department maintained the BIG PICTURE and distinguished themselves as the leaders in fleet anti-air warfare. Closely associated with Operations, the Weapons Department exercised and maintained one of the most advanced missile systems in the U. S. Armed Forces. The work of Deck Division was obvious by the shipshape appearance and smart seamanship displayed by the ship and her boats.

As a tribute to the Ship's Company, this pictogram emphasizes the men of LEAHY.

On the 11th of September I will be relieved of Command by Captain Watt W. JORDAN, Jr., USN. Although I leave with regret, I also leave with a deep sense of honor and gratitude for the opportunity of working with a crew that has made LEAHY synonymous with professionalism. The fleet reputation of LEAHY as one of the finest if not the best ship in the Atlantic Fleet is a direct reflection of the hard work and professional approach to every task, large or small, by her officers and men. WELL DONE.

Finally, and for all of us, I extend our sincere appreciation to our wives and families for their faithful and unwavering support. They share equally every accolade and objective that we have achieved. Fair winds and following seas to all of you.

Sincerely,


Roy F. HOFFMANN
Captain, USN



1,000 INTERCEPTS



RDC KING and RDC BANKS (back) assist as LTJG WILLIAMS talks the pilot in for the 1000th intercept. Other AIC's not pictured are RDI TOMLINSON and RDI WALL.

The ability of a ship's air intercept controllers at directing fighter pilots to a target aircraft is a primary measure of that ship's AAW proficiency. On 8 June LEAHY's AIC's completed the 1000th successful intercept of the cruise. As of 16 August the tally was 1538. According to the fighter squadrons aboard the FDR, LEAHY is the best air control ship in the Sixth Fleet.



AUGUSTA BAY



RADM WELANDER inspects Second Division while at anchor on 22 July.

During a personnel inspection in Augusta Bay, Sicily, LEAHYMEN were literally seeing stars. While Rear Admiral WELANDER, Commander of Cruiser-Destroyer Flotilla Eight, was inspecting Ship's Company, Vice Admiral MILLER, Commander of the U. S. Sixth Fleet, unexpectedly came aboard.



CAPT HOFFMANN, VADM MILLER, RADM WELANDER, and CDR CAMPBELL on the Quarterdeck

10 YEARS OLD

On 4 August the crew of the USS LEAHY celebrated the ship's tenth birthday. LEAHY was constructed by the Bath Iron Works Corporation and first commissioned on the 4th of August 1962 in Boston, Massachusetts. She was the first of an entirely new class of guided missile frigate which became known as double-enders. On 18 February 1967 she was decommissioned and turned over to the Commander, Philadelphia Naval Shipyard for extensive modernization and recommissioned on 4 May 1968. At ten years of age the LEAHY has proven to be one of the finest ships of the United States Navy.

On LEAHY's birthday the crew was given a special steak and lobster dinner with an appropriate birthday cake and ice cream. The officers celebrated with a traditional mess night and the Air Wing aboard the USS F. D. ROOSEVELT honored her side-kick with a ceremonial fly over. Parts of the fly over were low enough to be called "fly unders."



PONY EXPRESS



The nickname given to the mail helo is not at all inappropriate, since mailing letters from destroyers at sea involves tricks that would have amazed even Buffalo Bill Cody. Once the ship's mail is sorted and bagged by the postal clerk, it is taken to the fantail. A helo from the carrier can then lower a cable to the deck and lift the nylon bags and boxes into its cargo



bay. Once delivered to the carrier, mail is resorted and flown to either Athens, Greece or Naples, Italy for further relay to New York via commercial air. From the General Post Office in New York City our mail enters the regular mail system.



CDR CAMPBELL , EXECUTIVE OFFICER

LT WALLACE, NAVIGATOR AND SHIPS SECRETARY





LTJG GULLIKSON AND LCDR LANADS, THE SUPPLY DEPARTMENT

CHALLENGER (AG-40) DEPARTING THE BAY, BOSTON, MASS.
ON THE 22ND, 1964. (LEFT) LTJG GULLIKSON, (RIGHT) LCDR LANADS

ENGINEERING DEPARTMENT

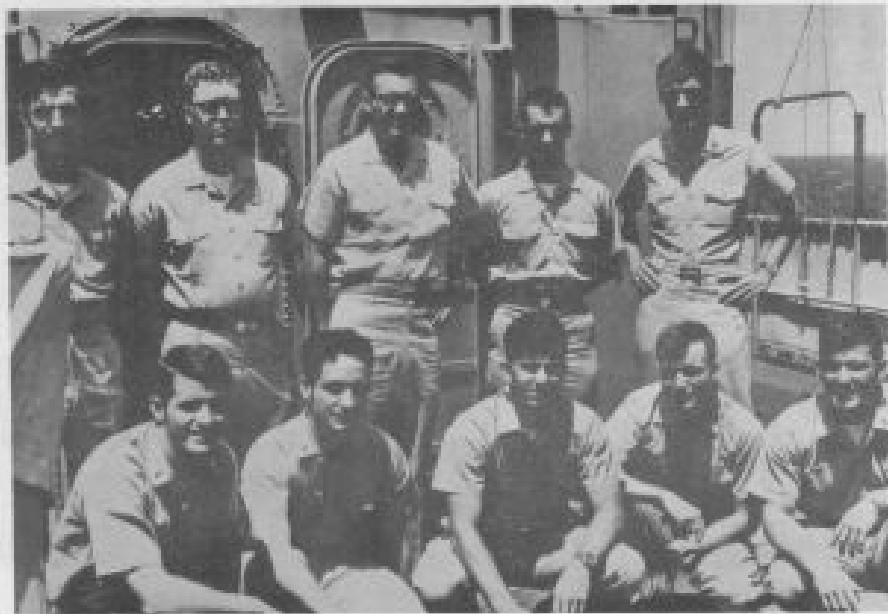
ENS PORTER, LTJG CYBORON, LCDR BIANCO, ENS TYLEND, ENS FINNEY





LTJG M^CHEETERS, LT COUCHOT, LTJG WILLIAMS
 CWO2 PAULIKONIS, LCDR WERNER, LCDR WOMBLE, ENS OWENS

LTJG PSOR, LT WINTER, LCDR POWERS, LT FAITH, LT MASHAW
 ENS BONIFACE, LTJG FRIEDEN, ENS ARCHDEACON, CWO2 TSEBY, LTJG PARKER





YN3 CONNORS, YN2 SCHNEIDER, YN2 RINGENBERG, PN3 NEWBERN
SN LIENBERGER, YMC DE GRASSE, PN3 LASHER



PC3 LAMISON, PC2 CULLINAN



HM3 CRAWFORD, HMC BRIDGES



QM2 AYLOR, QM3 WISSLER, CAPT HOFFMANN, QM1 BRADSHAW
QM3 STRAIN, QM3 STALEY



SD2 PASCUA, TN MORENO, TN RICHEAL, TN ACUARIO, TN GARCIA,
TN DIERCKS

SN LUCKY



DK1 AGAS
DK3 COX



CS3 PAGE, CSSN DUNNE, CSSN TORRES, CSI JOHNSON



SHSN BROOKS
SHSN CORBETT
SHSN ROBERSON

SH2 WALLERIUS





FN MOSBLECH, SN MURPHY, QMSA KAGY, SN LAPAGE, SA BURTON
SA KELDGMAN, SN DEVLIN, SN SHEPPARD, SMSA LEMAY, SA WELBORN,
SN PASCOE, SA CSENCICS, BTFFN FRANCE

SK08 WEBB, SK2 LONDON, SK3 WALKER, SN PAPPAS
SK3 HUGO, SK3 VIOLI





BT3 CRUISE, BT3 YAGER, BT3 TAYLOR, BT1N JOHNSON, BT1 KEITH
BT2 WELLS, BT3 DONELSON, BT1N BANKS

BT1 HARRISON, BT3 KRESS, BT1N POESCHEL, BT3 MALLETT, BT3 KRENZ
BT2 KRANZ, BT1N LAKE, BT1N SCHWEIKERT, BT1N BLAIS





MM3 LEYDA, MMFN OSELL, MM3 RICE, FA WAGNER, MMCS DIETZ,
MM1 SULLIVAN, MMFN SOUDERS

MM2 SMITH, MM3 STOUFFER, FN SEIDL, MM3 LYNCH
MMFN HACKNEY, MMFN DOUGHER, MMFN MCQUIRE, MM3 REINER
MMFN SCHLICKEN, FA SAUNDERS, MM1 TURNER, MMC GARDNER





HTC SHAW, HTFN TOWNSEND, HTFN MORDEHOFF, HT3 LUCAS, HT3 LAUER
HTFN O'DONNELL, HT1 MAGILL, HT3 POULIOT, HT2 PETERS, FN LINTHICUM
FN KINCAID, HTFN CHRUDIMSKY

MMFN SHOWERS, MM1 LAWLESS, MM3 WEBB, MMCS BEENAN, MM3 PIPER
MM3 THERIOT





EM2 SUNDERLIND, EM2 FORRER, EMCM KOPP, EM2 LAMSON
EM2 FARRIS, EM3 VANMETER, EM3 YOUNG, EM3 ATIENZA

IC3 BARROW, IC2 WOODS, IC2 WENNER, ICC HAYES, ICFN
FUSSELL. FA COLE, IC2 DIBBERN





RD3 GABANY, RDSN REIF, RD1 LYON, RDSN DAUGHERTY, RDSN SWARTZ
RD2 O'BRIEN, RD2 WOOD, RDSN WYROSICK

RDSN BURKE, RD2 CHANEY, RD3 RYAN, RDSN PRITZ, RDSN BLACK
RD3 SCHAFER, RD3 ROSENQUIST, RDSN DESNOYERS





ETN3 SMART, ETR3 SUMMA, ETNSN BRINGHURST, ETR3 REMILLIARD,
ETR3 CARROL, ETN2 MCCLURE, ETR3 RISINGER, ET1 LEWIS, ETNSN MIL-
LER, ETN3 OBRICK, ETR2 FIKES, ET1 CASTELL, ETN2 BELL, ETN2 REED
ETR2 FARNSWORTH, ETR3 DANIELS, ETR3 PROTHRO, ETC CROWLEY

RDSA AUDITORE, EW1 DELUCA, RDSN BURKE, RD3 EBNER, RD2 KAYLOR



SMEN VANGULDER

SM3A NEWMAN

SMEN BRUNSON

SM3 MONIEL



RM3 ALBERS

RM3 KOSLOW

RM3 KASPEROWICS

RM1 RIGGIO



RM3N FORD

RM2 SWAN

RM3A FLYNN

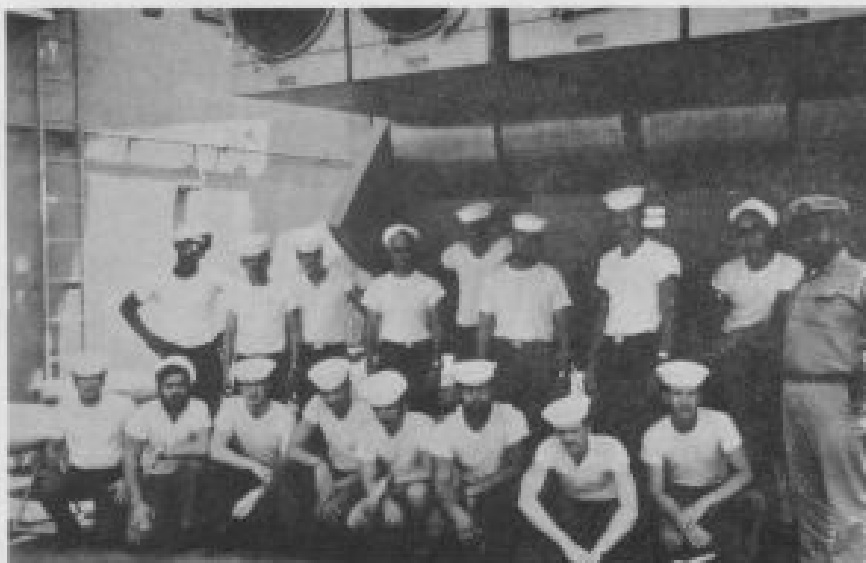




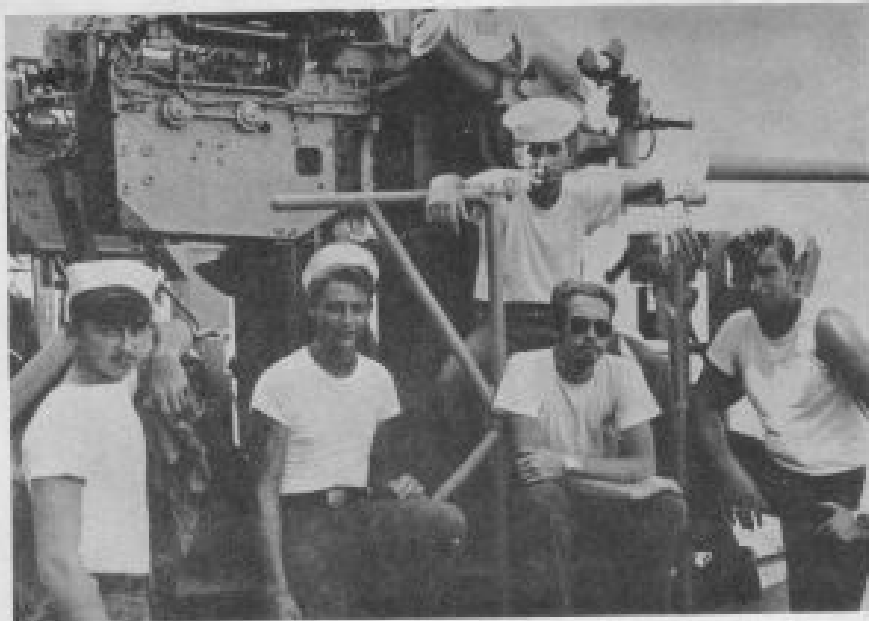
DS2 HALFORD, DS2 BRUCE, DS2 RIEGEL, DS2 WOLFE
DS3 THOMPSON, ST1 MAYNE, DS2 CAMPING, DS2 SUBANKS

STC LINDEMAN

GMG3 CHAMBERS, ST1 WHITE, STG3 BECTEL, STG2 ALBRIGHT
STG3 MAULE, STG3 HALLIMAN, GMT2 JOHNS, GMG3 SPRAGUE
TM3 MILLS, TM3 MURPHY, STCSN LAVASSEUR, STCSN SHEPPARD
STCSN ZIMMERMAN, GMTSN BELLAMY, STG3 DAVIS, STG2 TOOKE



AUGUSTABAY



GMCSN POUNDS, GMM3 DOWD, GMM3 BRIZZI, GMCSN ACKERMAN, GMCSN HORNYAK

GMM2 VANN, GMM3 JONES, GMM3 M^CPIERSON, GMM1 HARSHMAN, GMM3 STRASSNER
GMCSN RAY, GMM3 SPENDER, GMM2 OLSEN, GMM1 MASTERS



10 YEARS OLD



FTM1 SHULER, FTGEN DOMAPHON, FTMSN NAYLOR, FTM1 POST
FTM2 BEGLE, YN3 DAY, FTM2 HISTEN, FTM2 BROTHERTON,
FTM2 JACKSON, FTM2 LANG, FTG3 HINISH, FTM2 SHORT

ITGSM NOVAK, FTM2 HAWKINS, FTM3 LAUGHTER, FTM3 MIYASATO



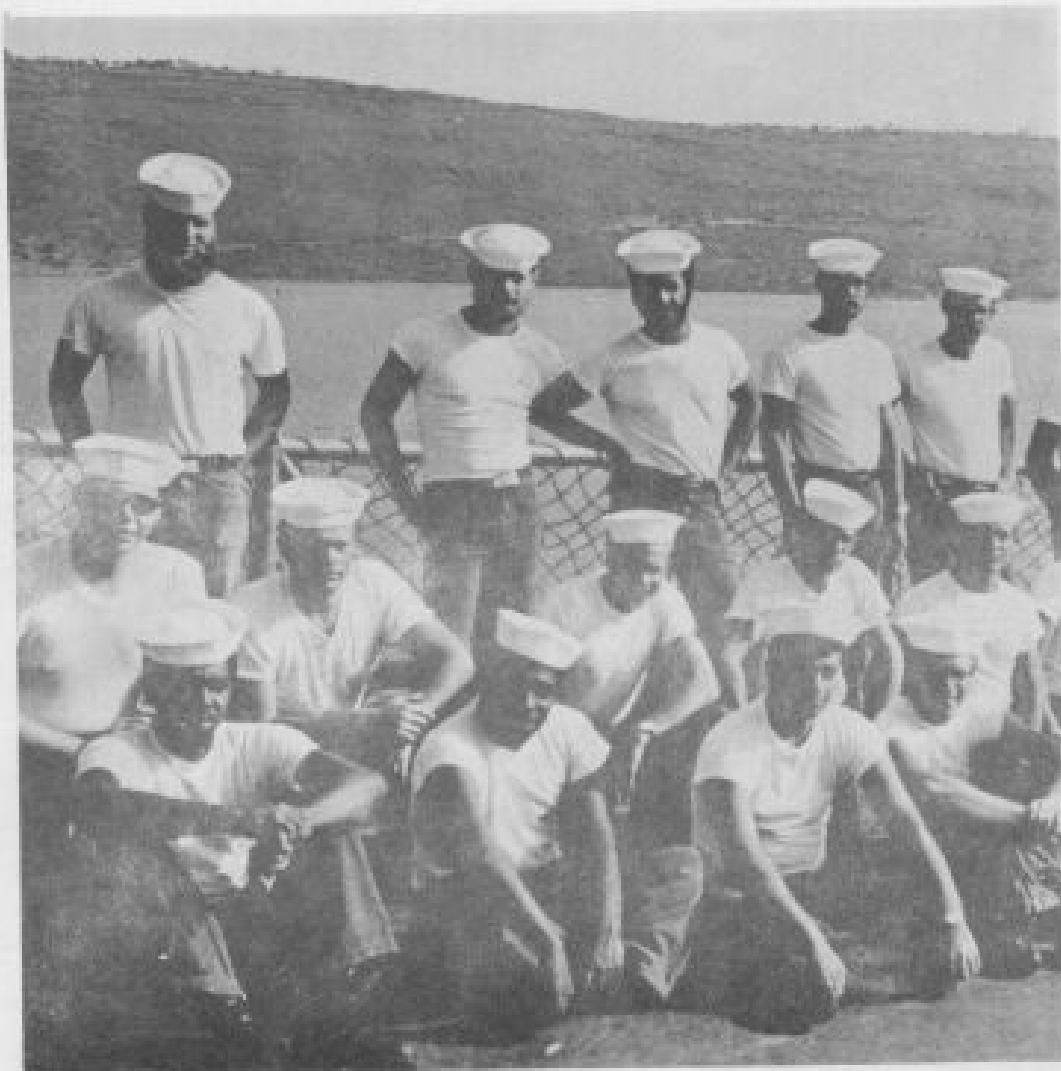


FTG3 KIESE, FTG1 BEATTY, FTG2 WHITWER, FTGSM PAGE

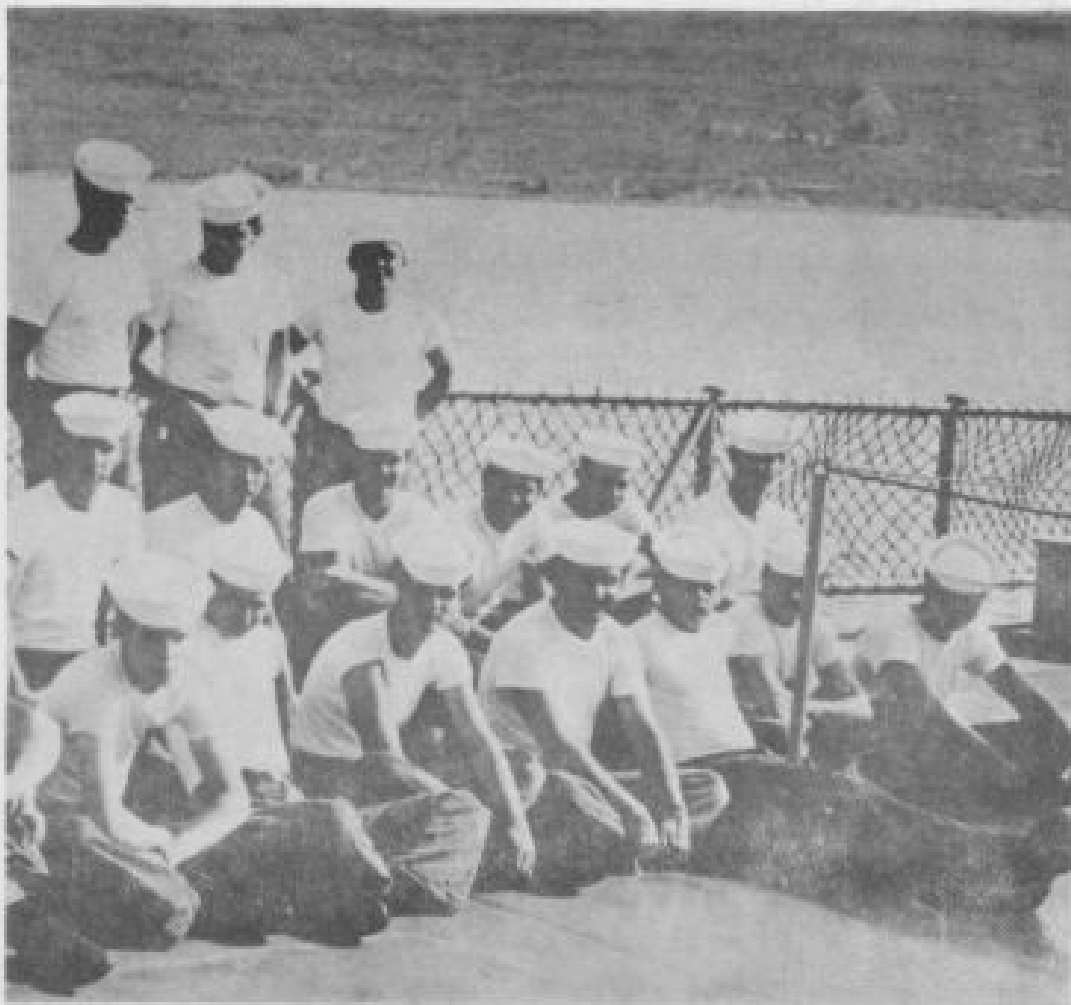
FTM2 JEFFERY, FTM2 CROSS, FTM3 PROCKISH



LOG INTERCEPTS



SN WESTBERG, SN MURRAY, SN CARLISLE, SN BAIRD, SR RICHMOND
SN GOJAN, SN HUNTER SA CURRIE, SN WRIGHT, BM3 LEWIS
SN BEAUCHAMP, SN JONES, SA FREEMAN, SN BAXTER



SN ALLENSPACH, SA HOLT, SN DODGENS
BM3 SANDAGATA, SN ZACK, SR HOLMES, SA RUDA, SR WILLS, SN NOBLE
SN MALLOY, SN TAYLOR, SN CROWE, SN LAPLANTE, SN ANDERSON, SN BROWN, SN POWELL

DEPARTMENT OF THE NAVY

Commanding Officer
USS LEAHY (DLG 16)
FPO New York 09501

POSTAGE AND FEES PAID
DEPARTMENT OF THE NAVY



OFFICIAL BUSINESS
PENALTY FOR PRIVATE USE, \$300

TO: